



CESEP ASBL

CENTRE FOR EUROPEAN SOCIAL AND ECONOMIC POLICY

Rue de la Pacification, 65
B-1000 BRUXELLES

E-Mail : cesep@skynet.be

Website: www.cesep.eu

INDICATORS OF DISABILITY EQUALITY IN EUROPE

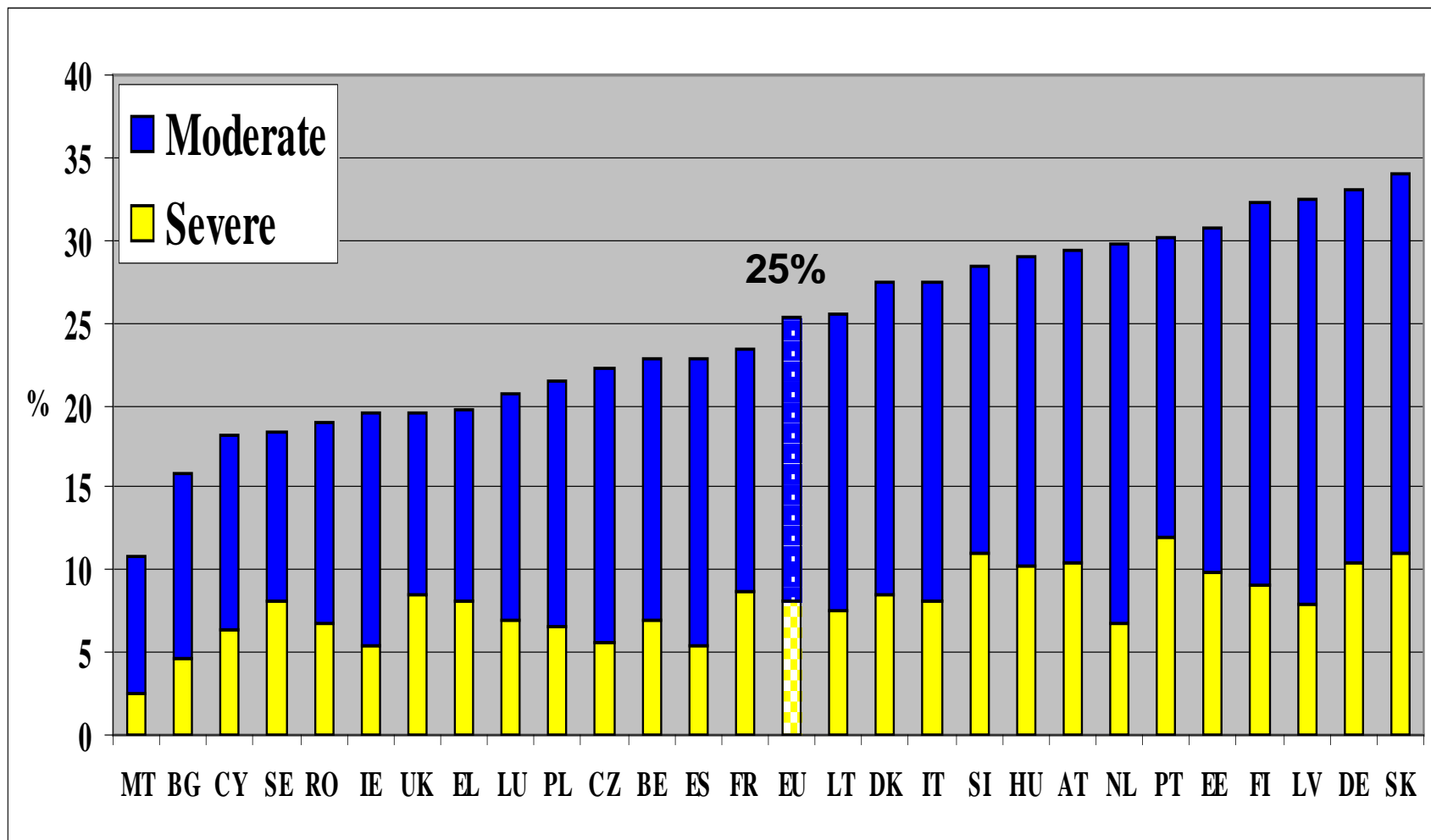
Comparative data on a selection of quantitative implementation indicators

December 2010

**FOR
Academic Network of European Disability Experts
ANED**

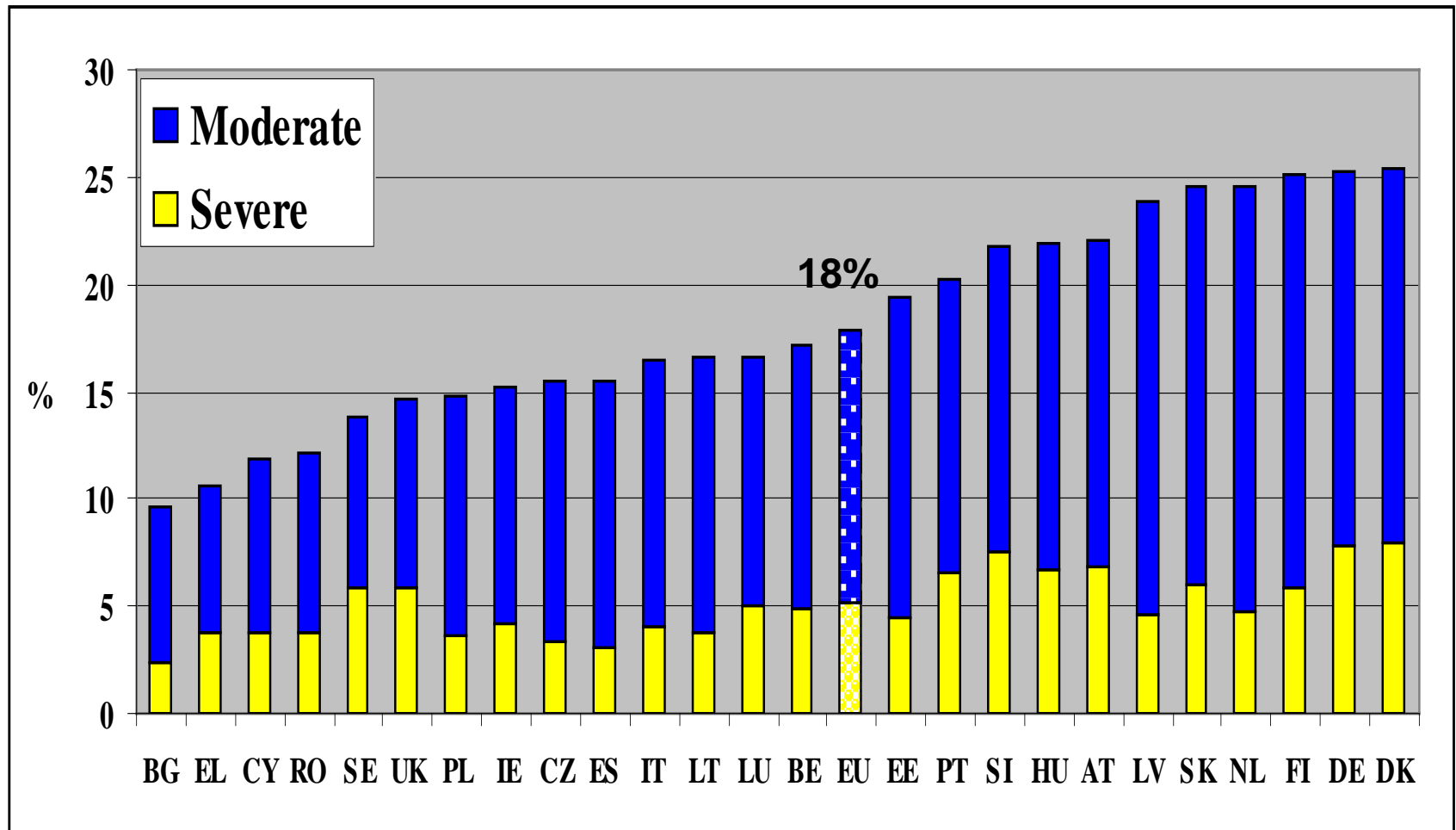
NUMBER OF PEOPLE WITH DISABILITIES

% of the same age group. Age 16+



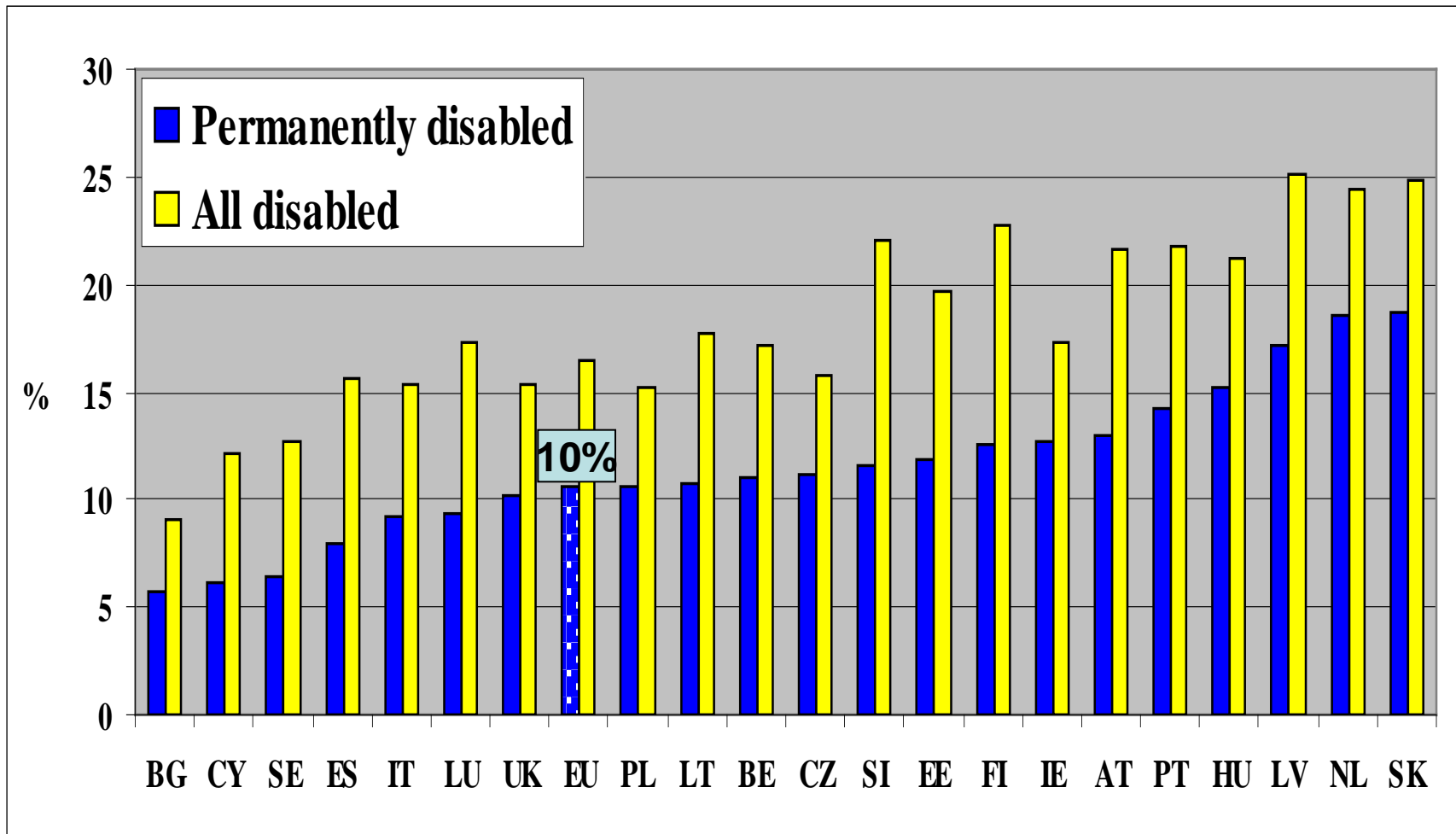
NUMBER OF PEOPLE WITH DISABILITIES

% of the same age group. Age 16-64



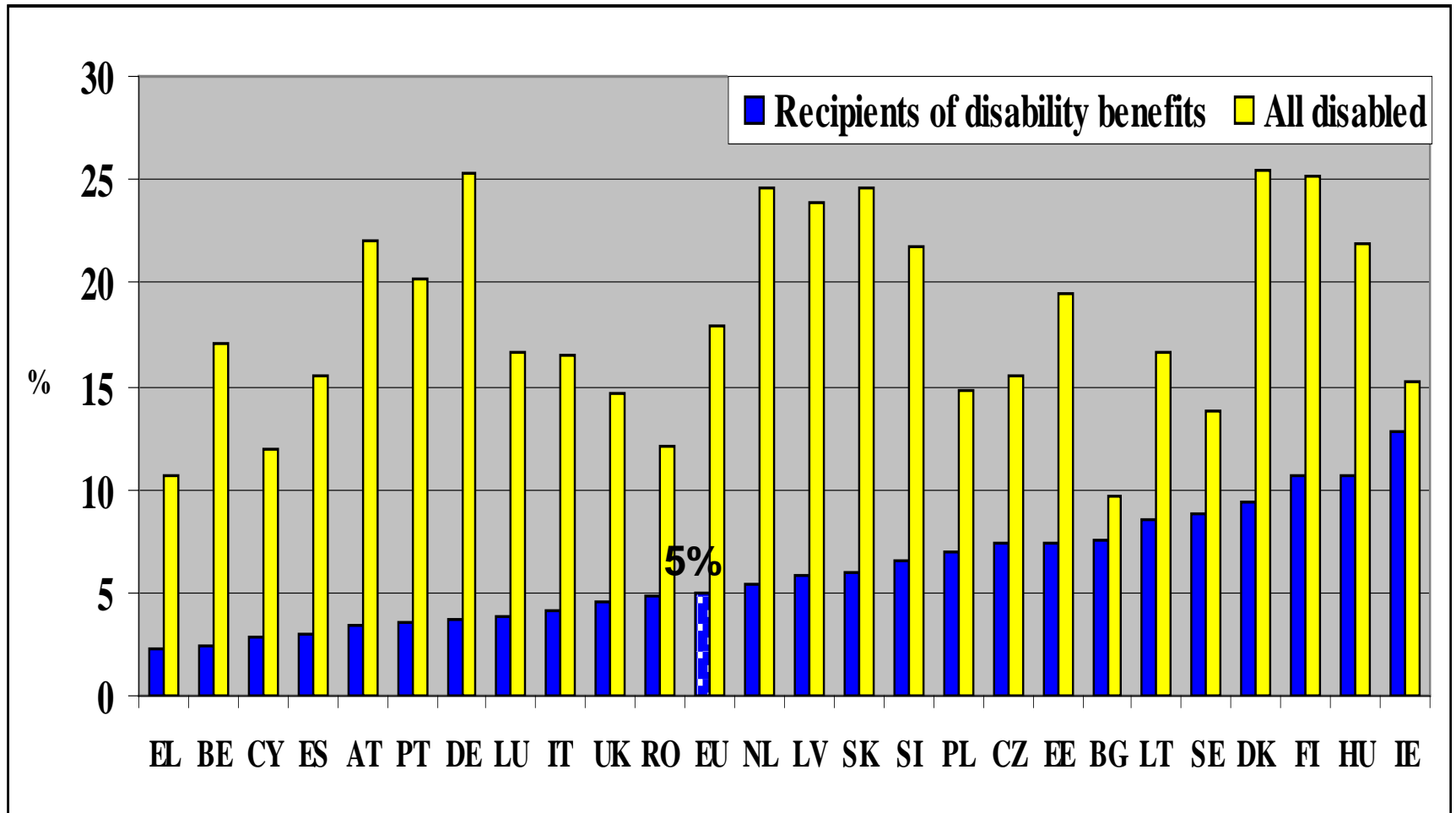
NUMBER OF PEOPLE PERMANENTLY DISABLED

% of the same age group. Age 16-64



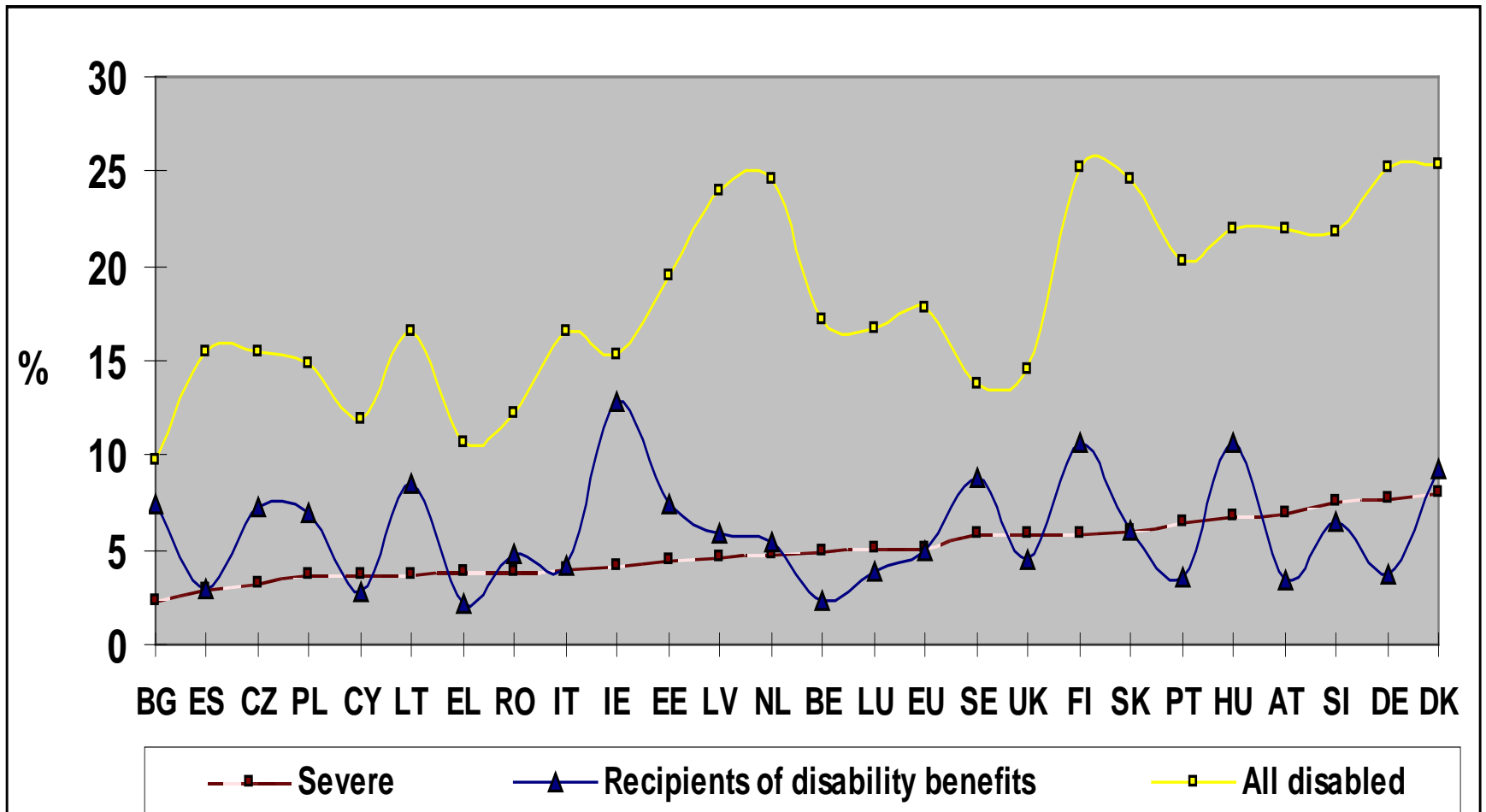
NUMBER OF RECIPIENTS OF DISABILITY BENEFITS

% of the same age group. Age 16-64



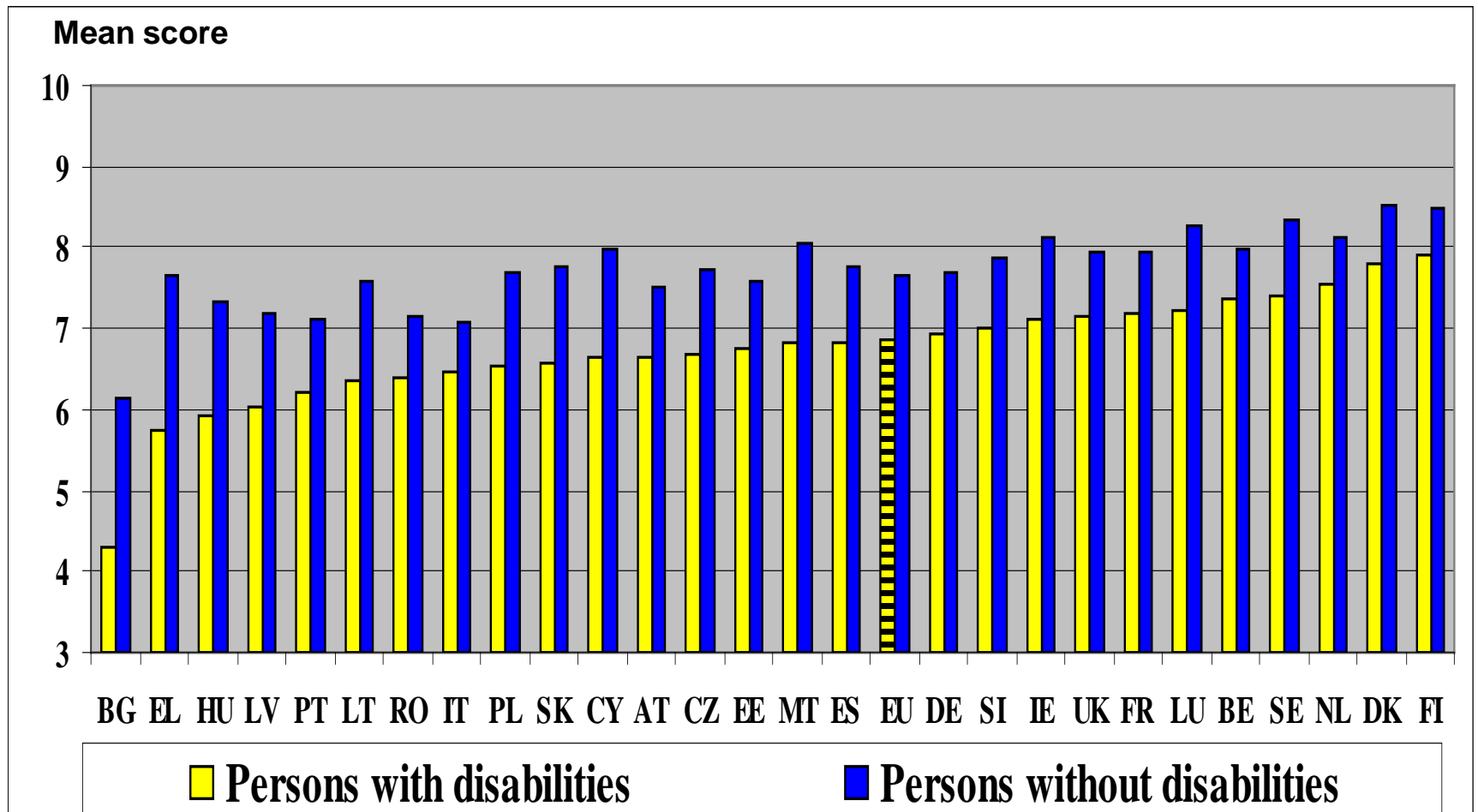
SEVERITY, RECIPIENCY & DISABILITY

% of the same age group. Age 16-64



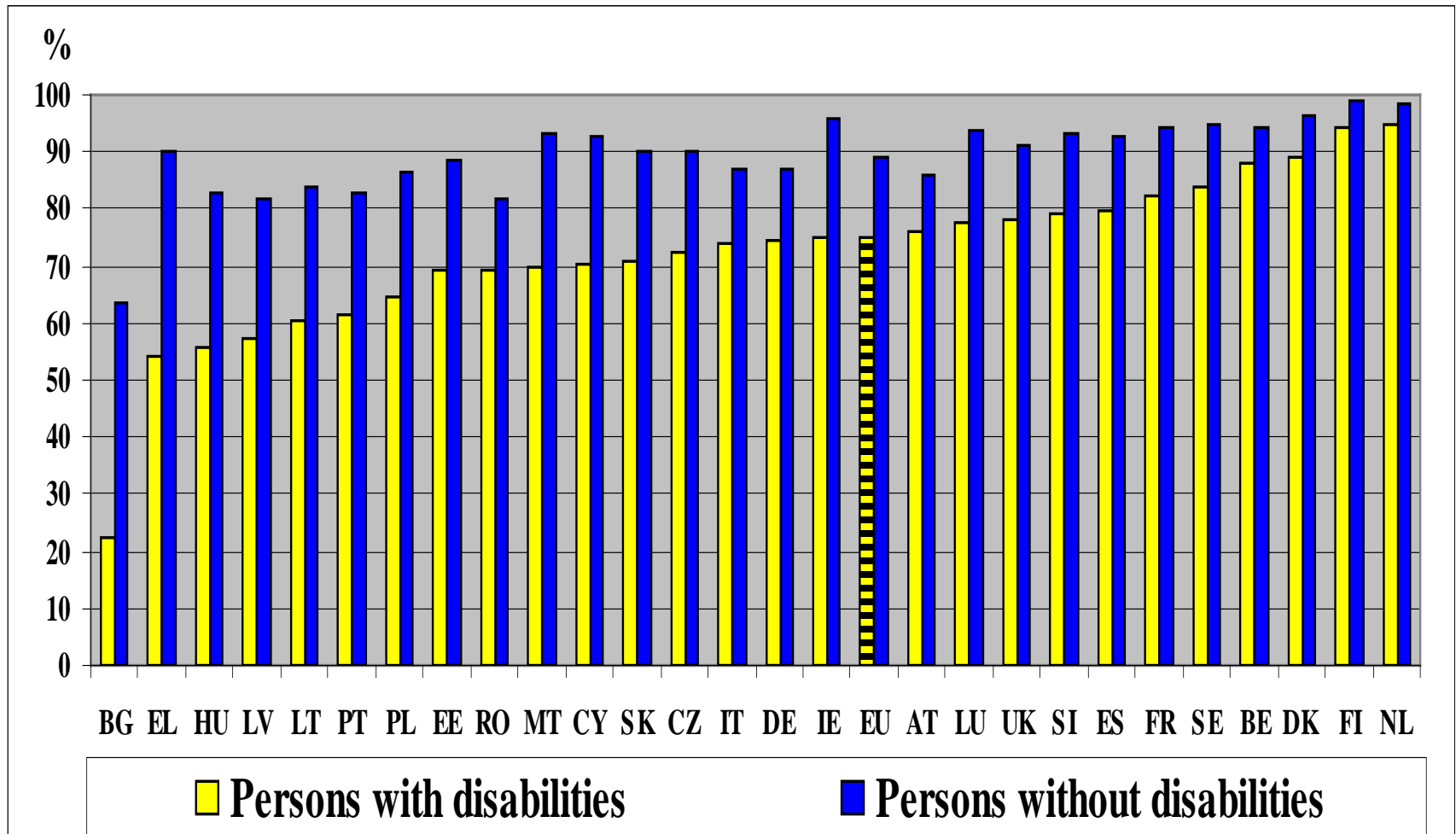
HOW HAPPY WOULD YOU SAY YOU ARE?

Use a scale from 1 to 10. Age 18+



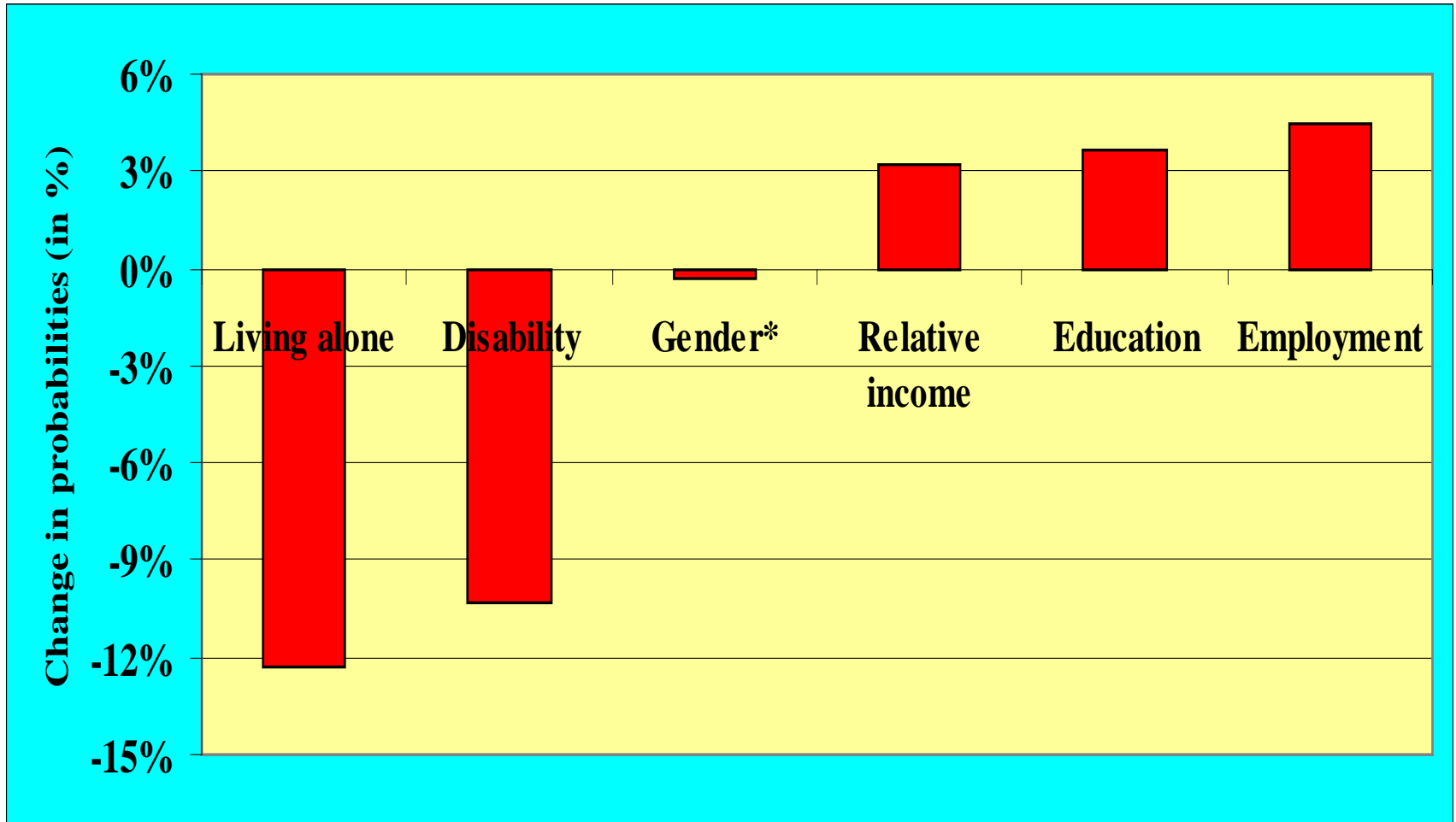
HOW HAPPY WOULD YOU SAY YOU ARE?

% with score from 6 to 10. Age 18+



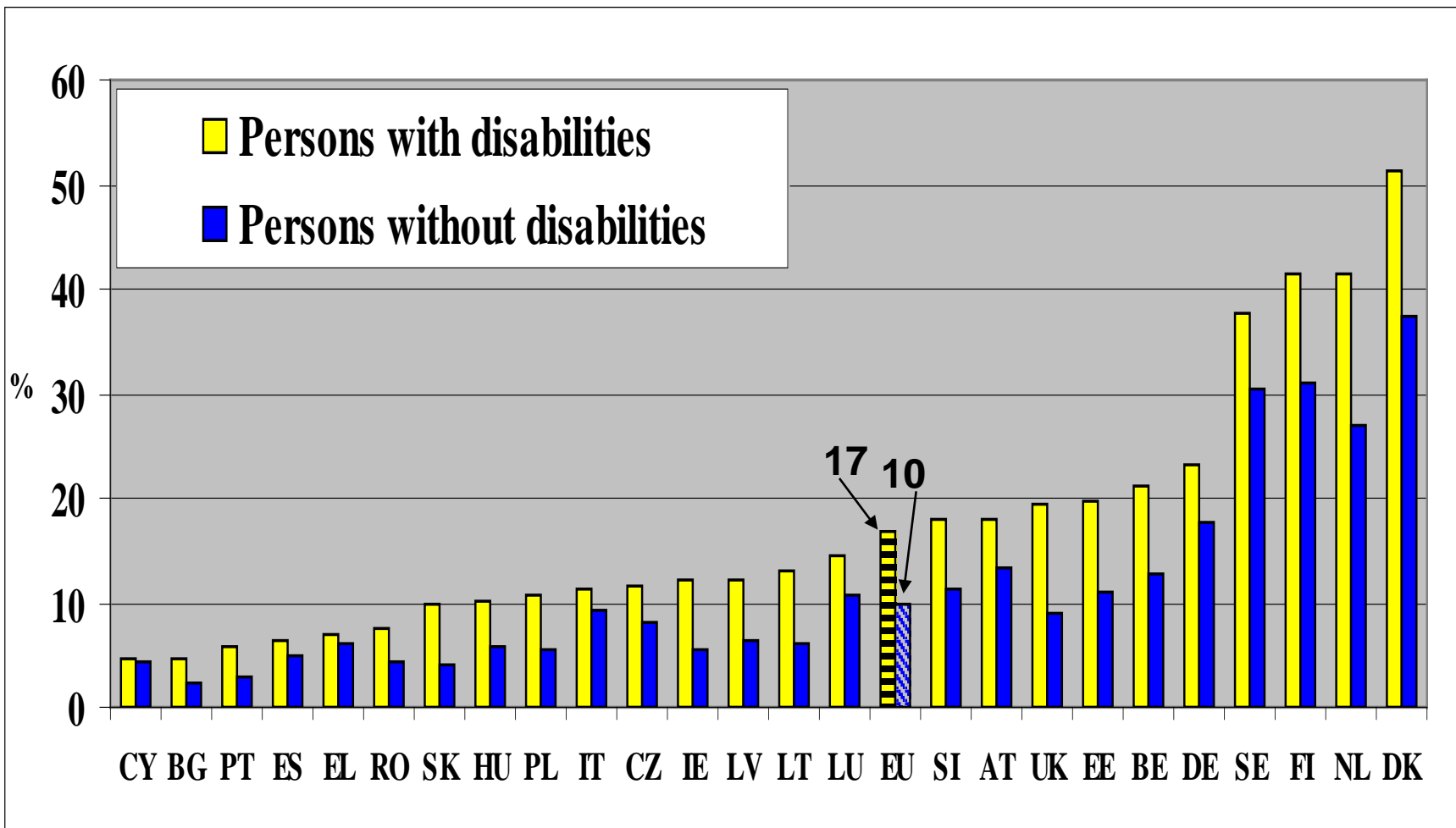
PROBABILTY CHANGE TO DECLARE 'HAPPY'

Probability to pass from score (1-5) to (6-10). Age 18+



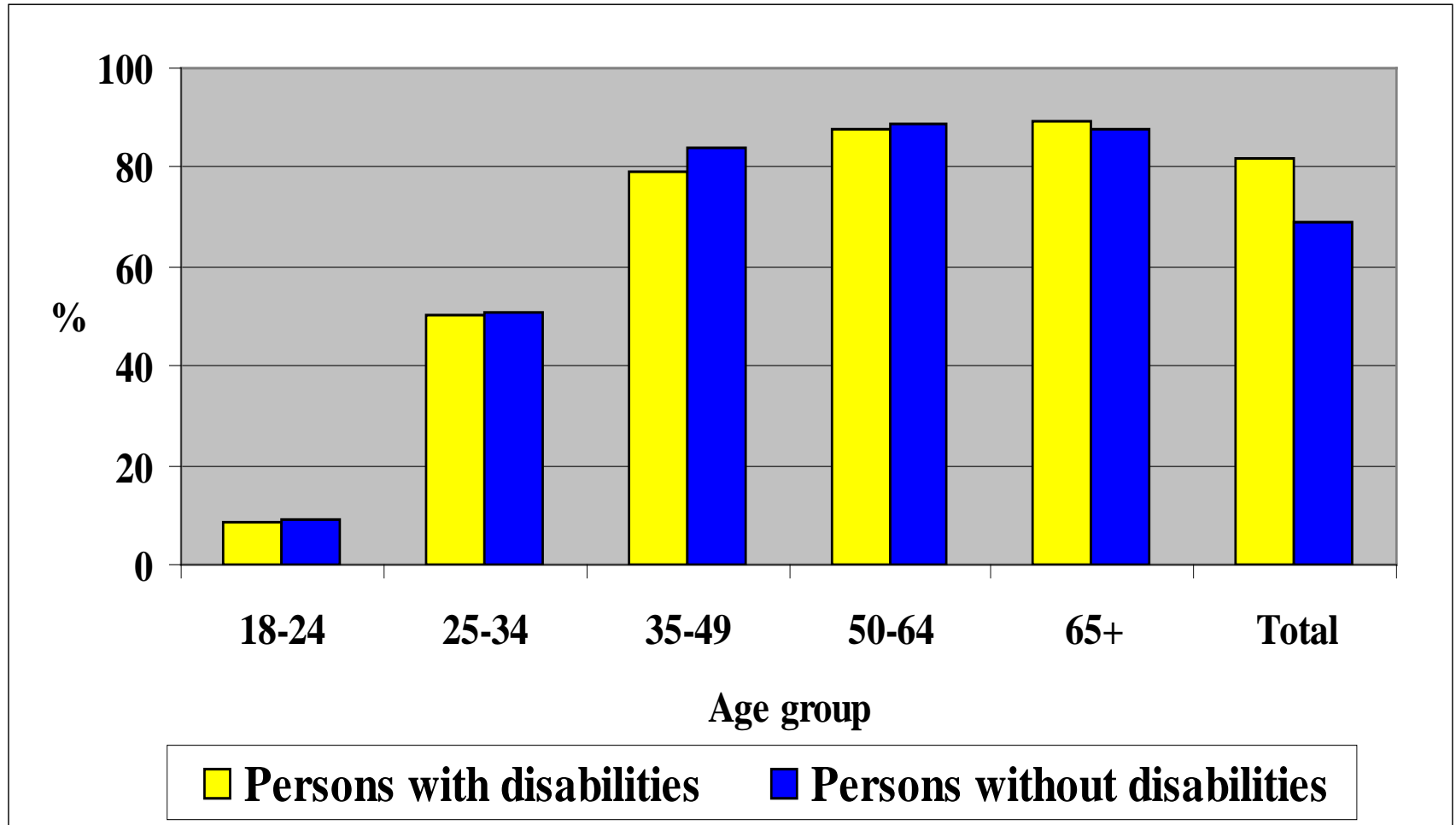
PEOPLE LIVING ALONE

Percent of people who live alone. Age 16-64



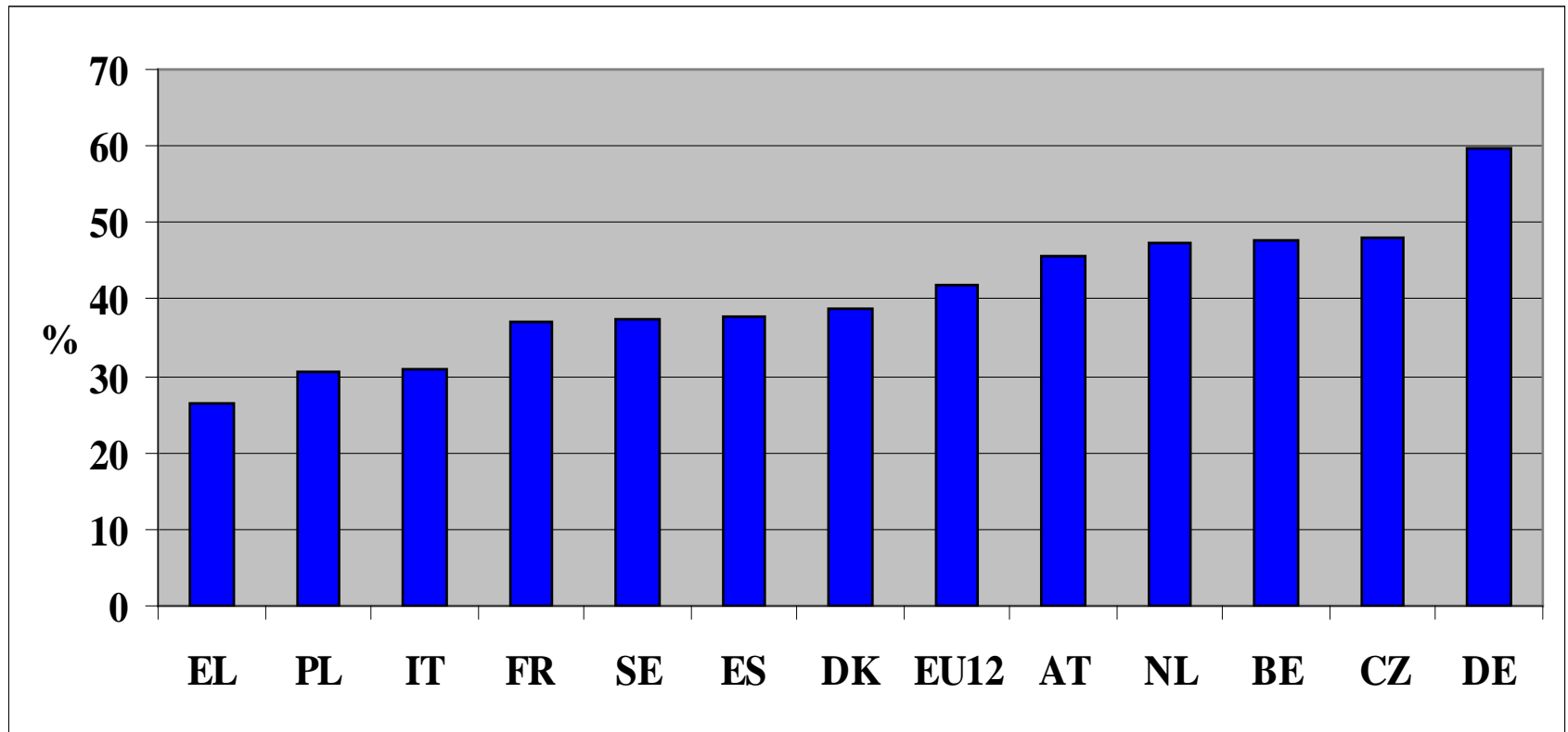
PERSONS WHO ARE PARENTS

Percent of persons who are parents; EU



ENOUGH HELP WITH PERSONAL ASSISTANCE

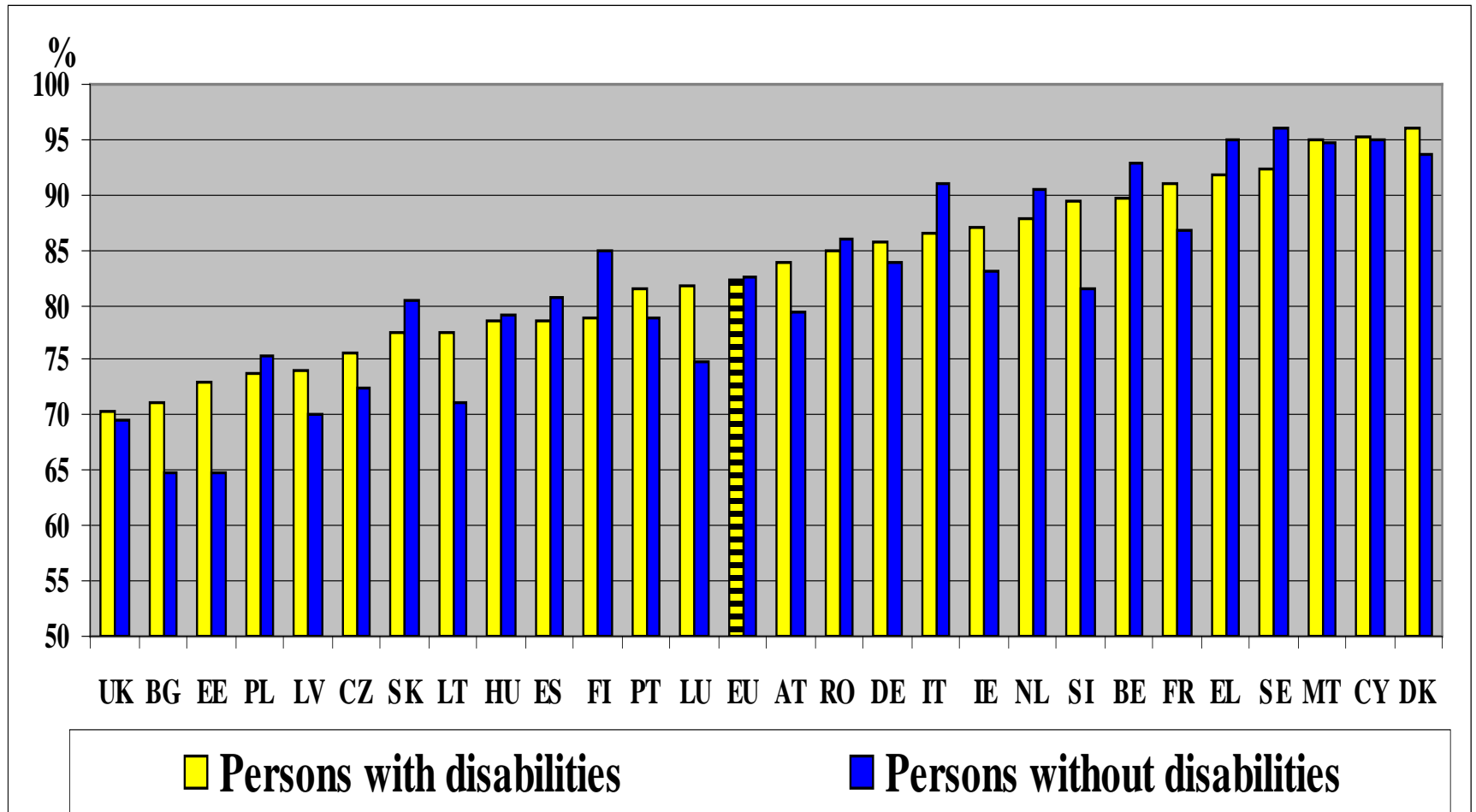
% of disabled 50+ declaring: Help meets needs 'All the time' or 'Usually'



Disabled people: people with Mobility problems, ADLs and/or IADLs

PARTICIPATION IN NATIONAL ELECTIONS

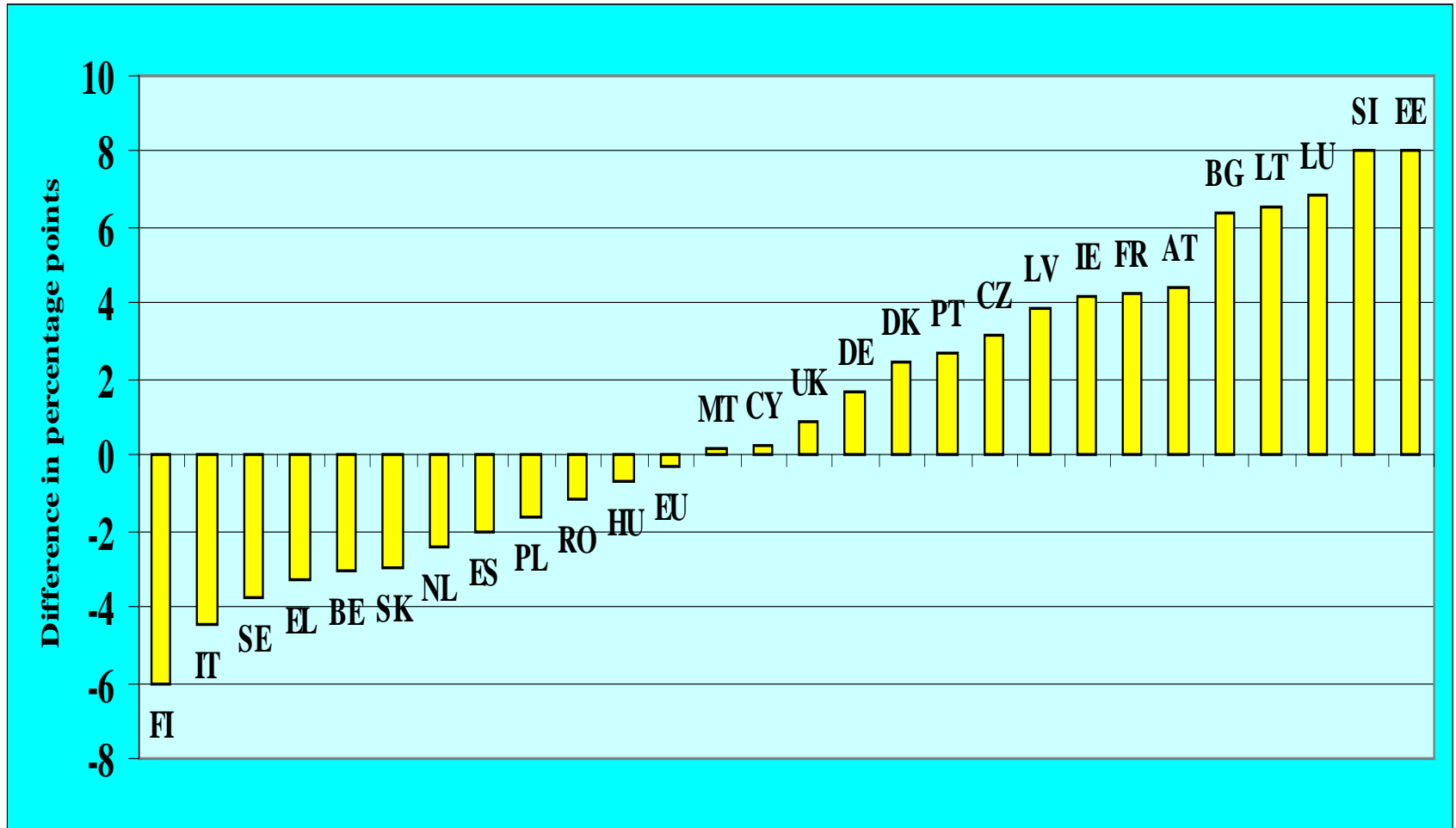
% who voted in national elections. Age: 18+



Significant national differences: see next

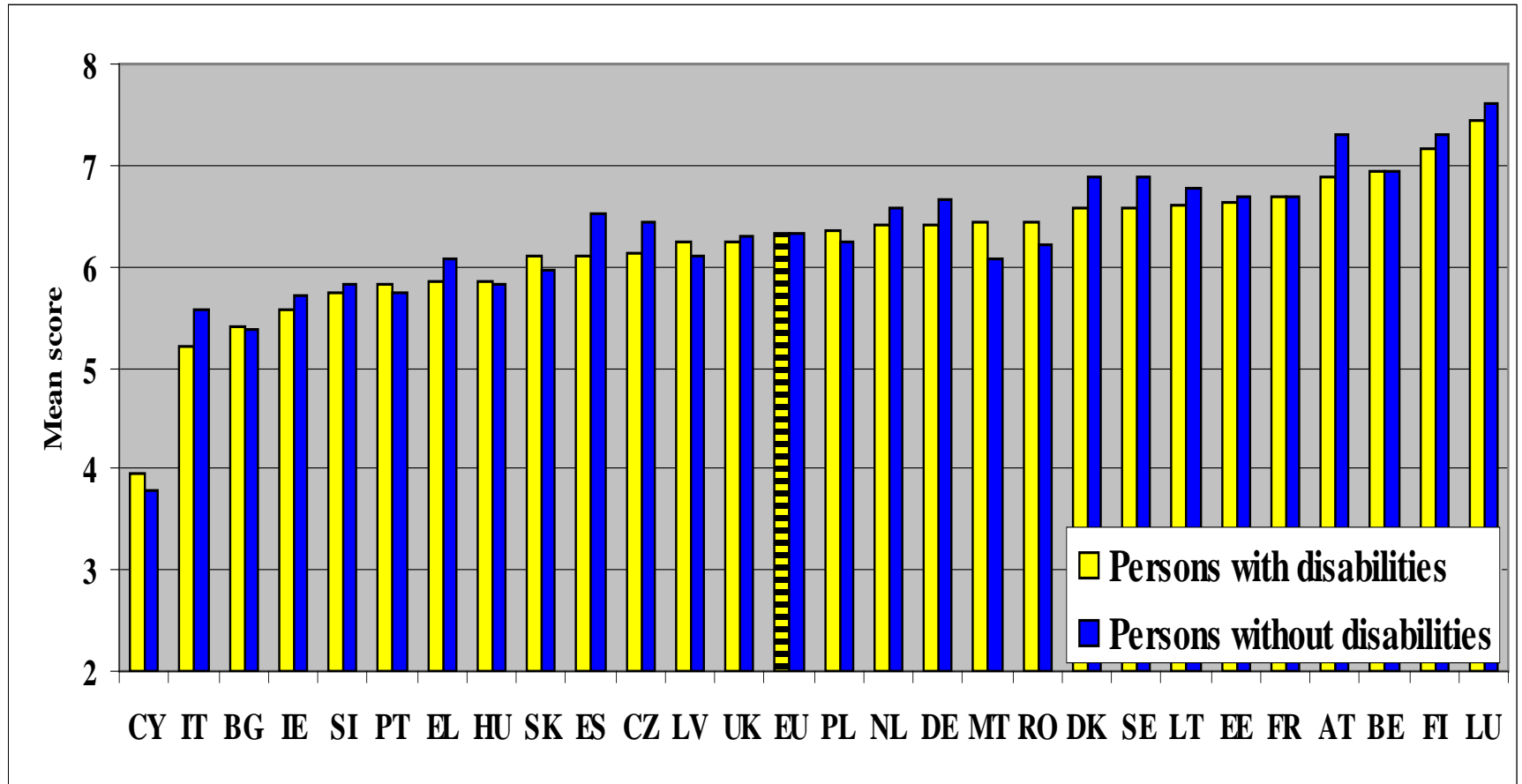
VOTED IN NATIONAL ELECTIONS

Percentage points differences between disabled and non-disabled. 18+



PERCEIVED QUALITY OF PUBLIC TRANSPORT

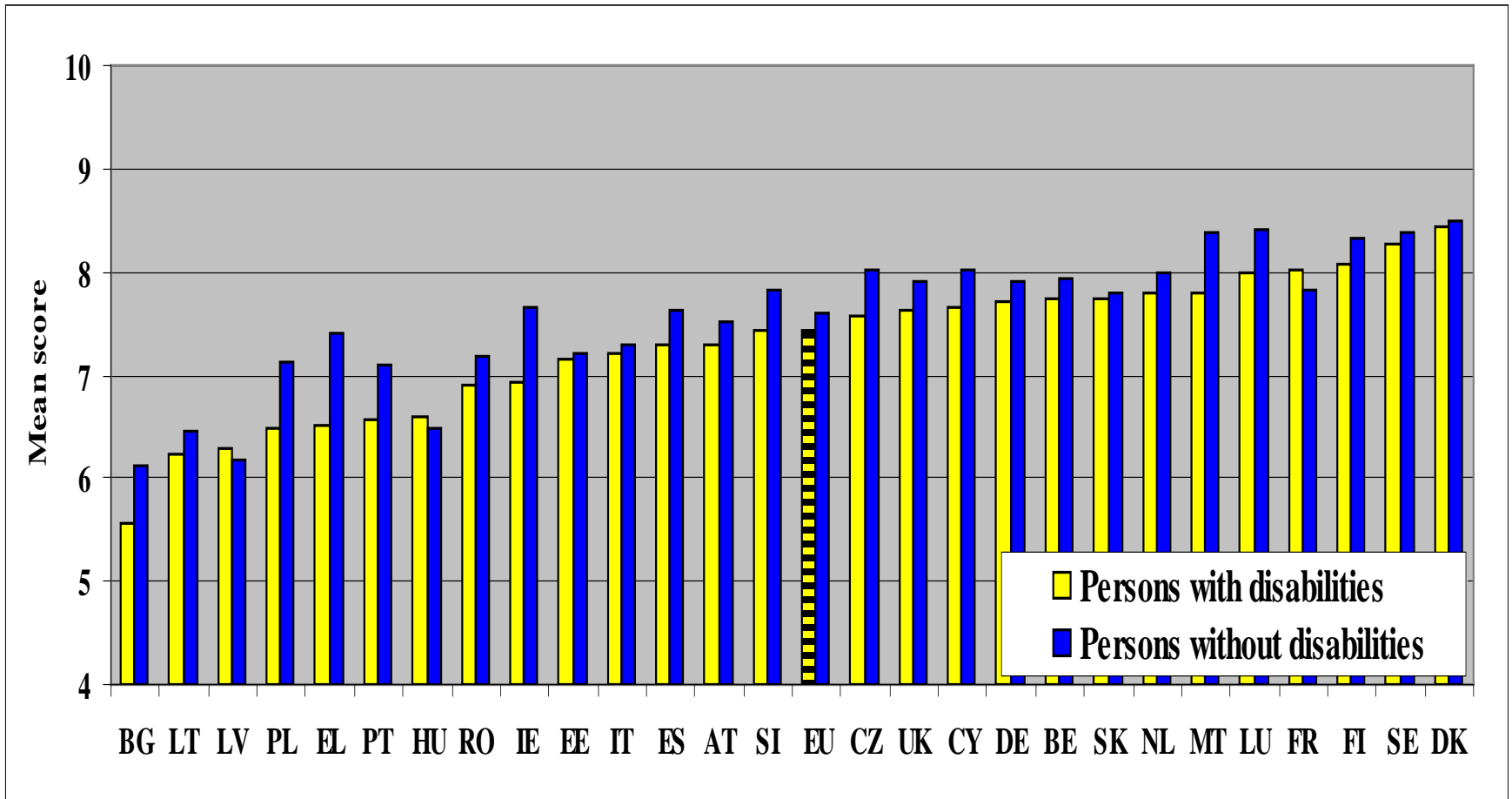
Mean score (score varies from 1 to 10). Age: 18+



Severe disability has a stronger negative impact compared to moderate

SATISFACTION WITH STANDARD OF HOUSING

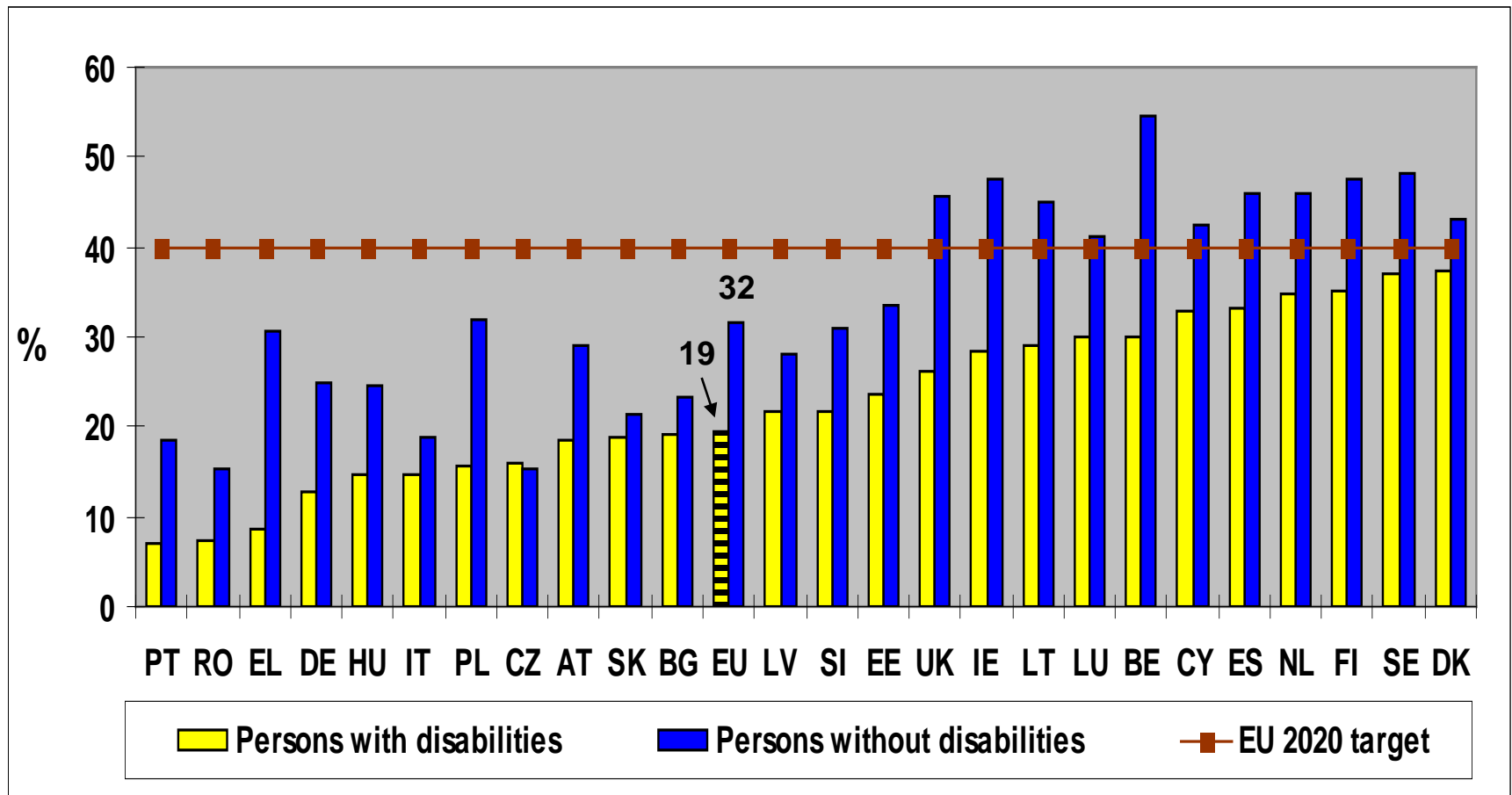
Mean score (score varies from 1 to 10). Age: 18+



People with severe disabilities report lower levels of satisfaction

DISABLED PEOPLE HAVING COMPLETED TERTIARY EDUCATION

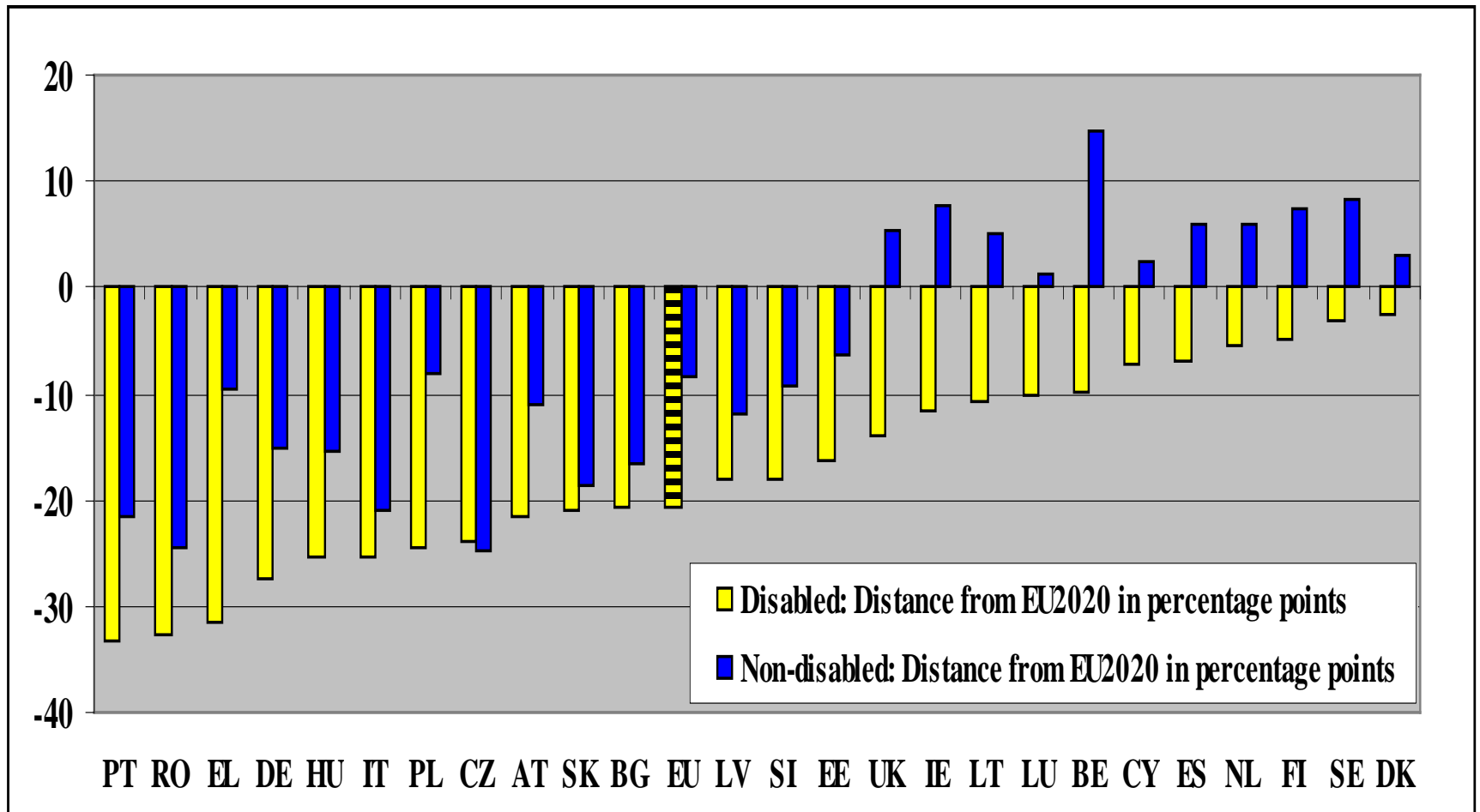
% of people who have completed a tertiary education. Age: 30-34



Europe 2020 strategy: increase the share of the 30-34 years old having completed tertiary education to at least 40% in 2020.

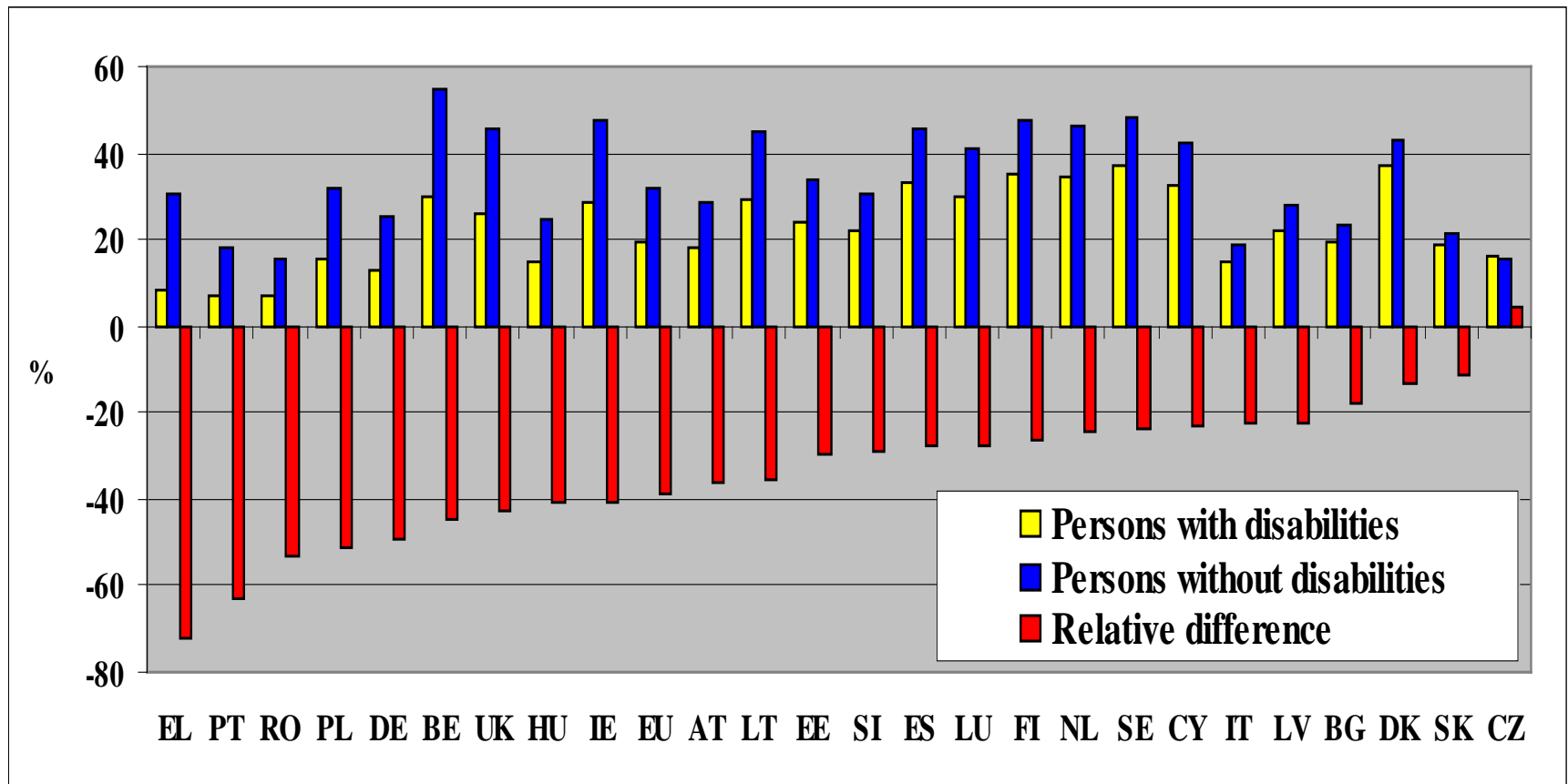
DISABLED PEOPLE HAVING COMPLETED TERTIARY EDUCATION

Distance from EU 2020 target in percentage points. Age: 30-34



DISABLED PEOPLE HAVING COMPLETED TERTIARY EDUCATION

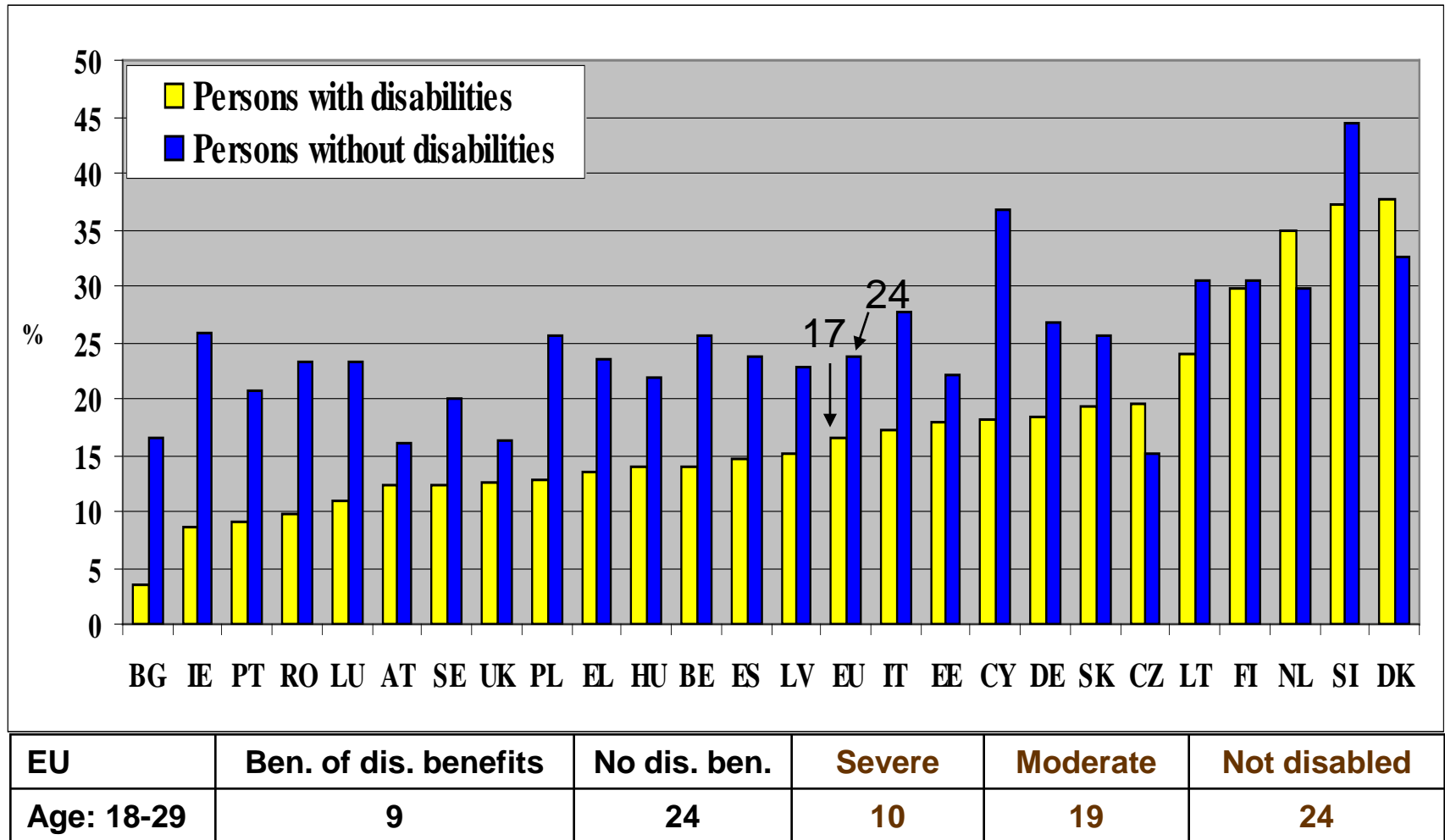
Disadvantage of disabled compared to non-disabled. Age: 30-34



$$\text{Relative difference} = 100 \times (\% \text{ of people with disabilities} - \% \text{ of people without disabilities}) / (\% \text{ of people without disabilities})$$

DISABLED STUDENTS IN HIGHER EDUCATION

% of persons attending tertiary education. Age: 18-29



TRANSITION FROM SCHOOL TO WORK

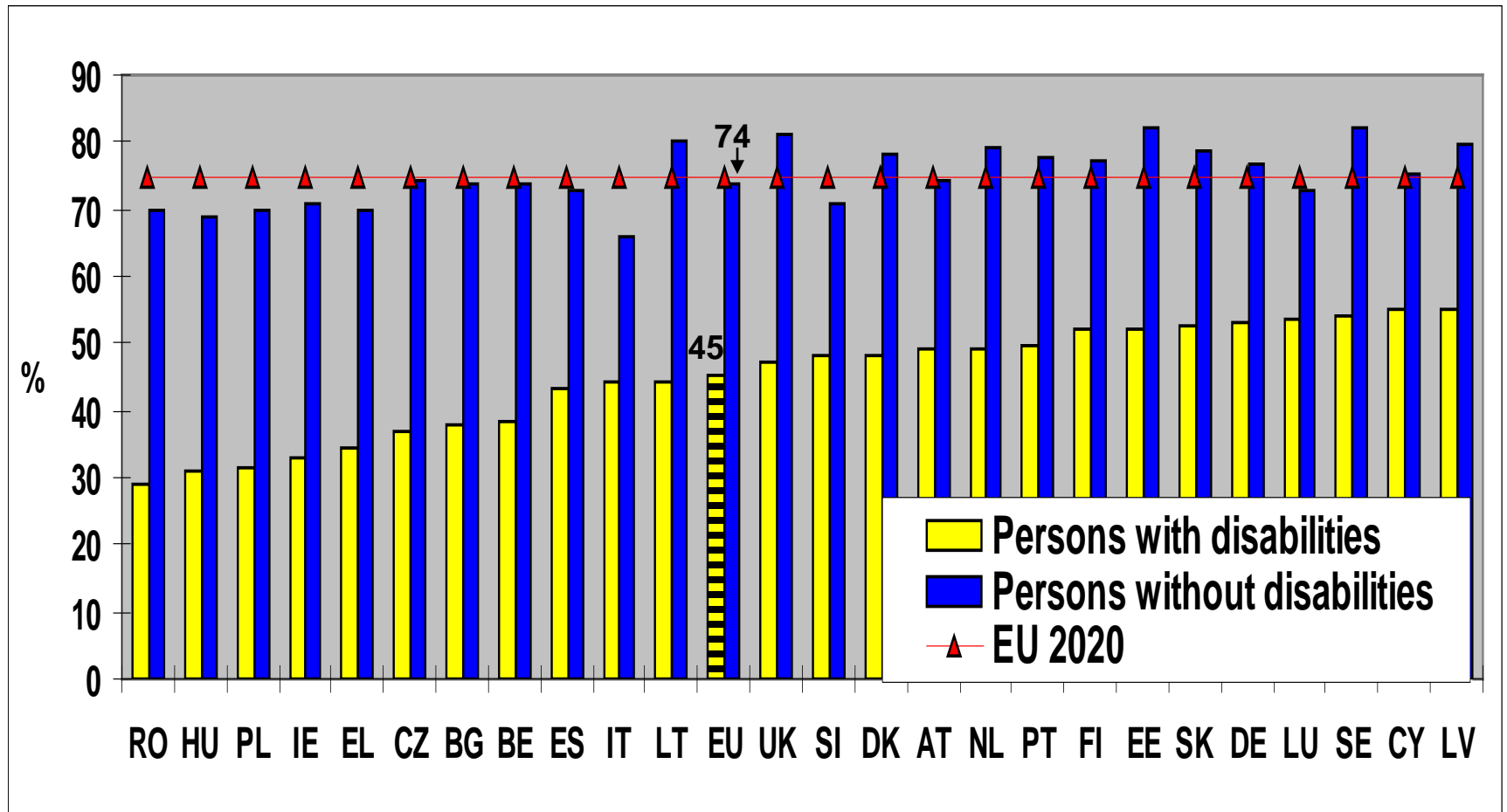
Transition probabilities. Age: 16-34

People in education in 2007

	Status in 2008				
	Employed	Unemployed	Education	Inactive	Total
WOMEN					
with disabilities	9	6	79	6	100
without disabilities	13	4	81	3	100
MEN					
with disabilities	11	4	78	7	100
without disabilities	15	4	78	3	100

EMPLOYMENT RATE

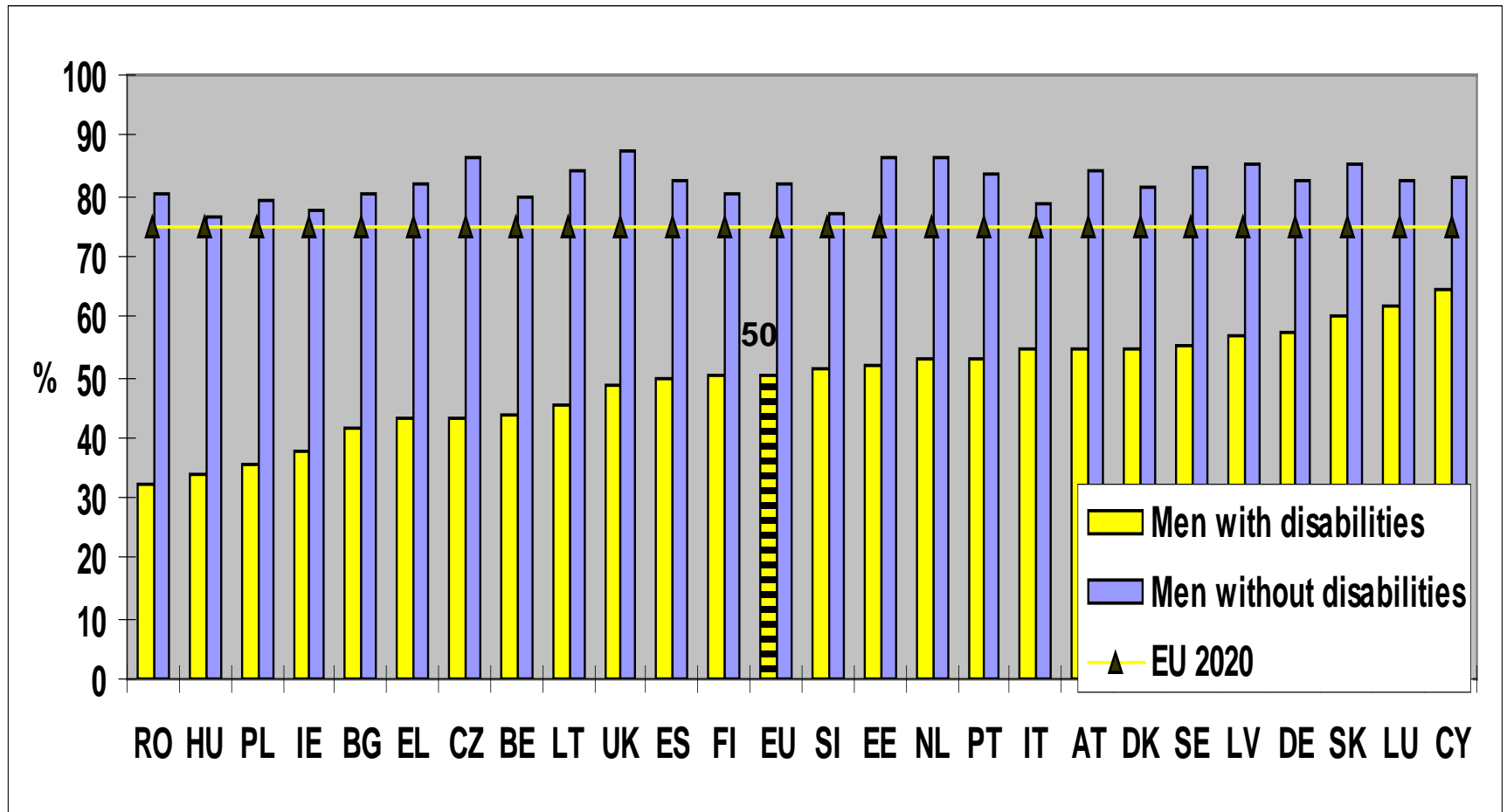
% of people aged 20-64



Europe 2020 objective requires that 75 % of the population aged 20-64 should be employed.

EMPLOYMENT RATE

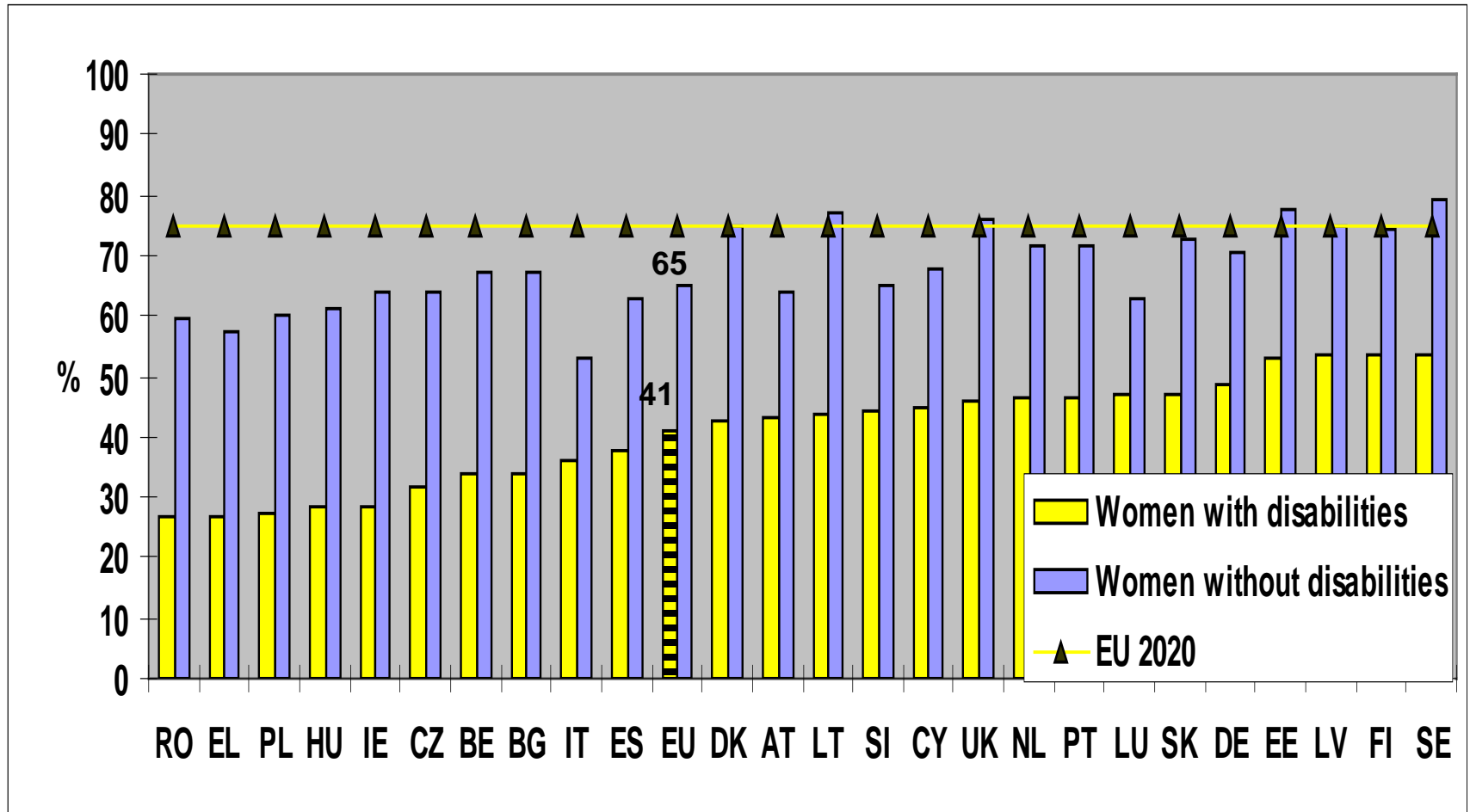
MEN: % of men aged 20-64



Europe 2020 objective requires that 75 % of the population aged 20-64 should be employed.

EMPLOYMENT RATE

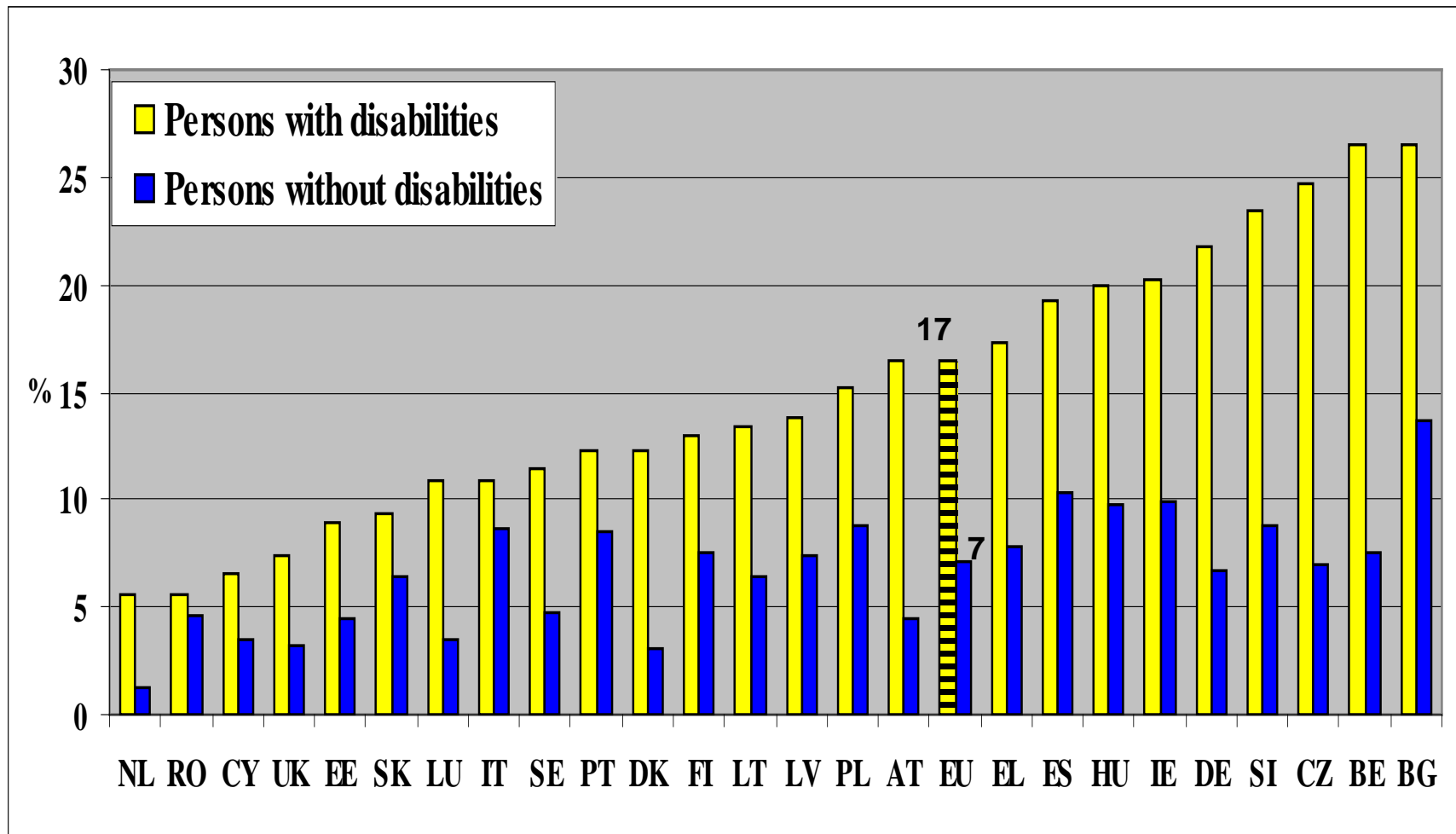
WOMEN: % of women aged 20-64



Europe 2020 objective requires that 75 % of the population aged 20-64 should be employed.

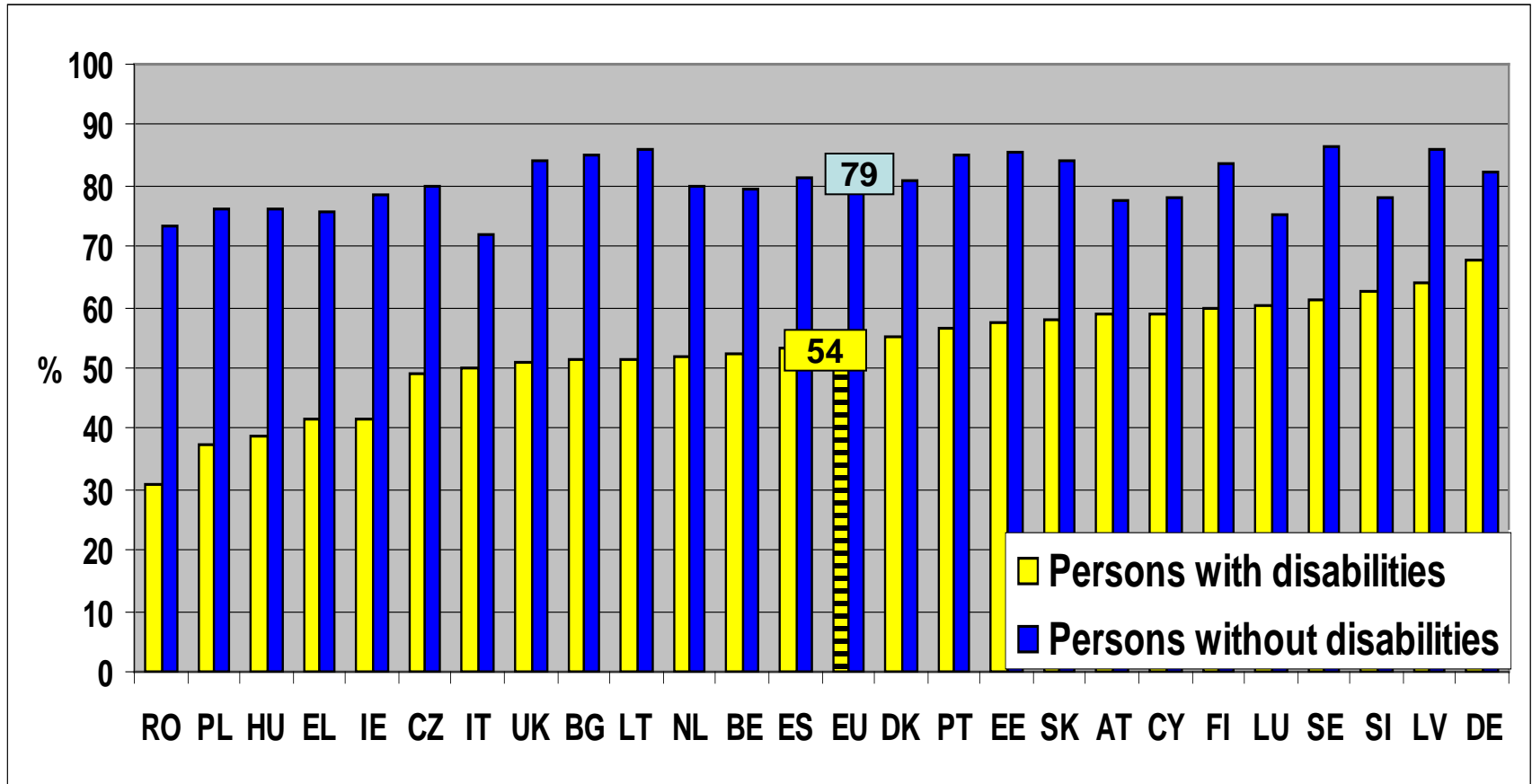
UNEMPLOYMENT RATE

% of economically active people aged 20-64



ACTIVITY RATE

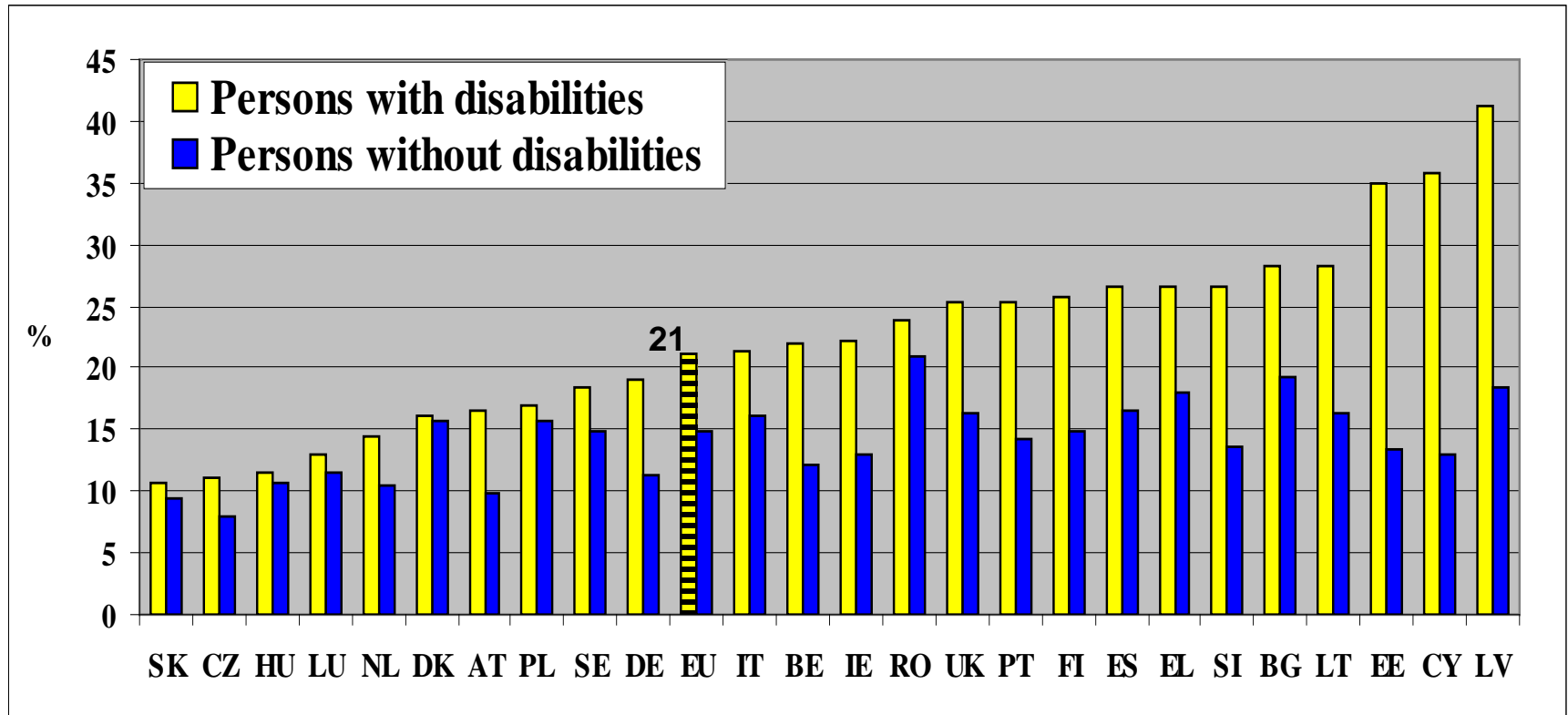
Economically active on the labour market as a % of people aged 20-64



	Women disabled	Women non dis.	Men Disabled	Men Non disabled
EU	49	71	60	88

RISK OF POVERTY

% of people living in households with income below poverty line. Age16+

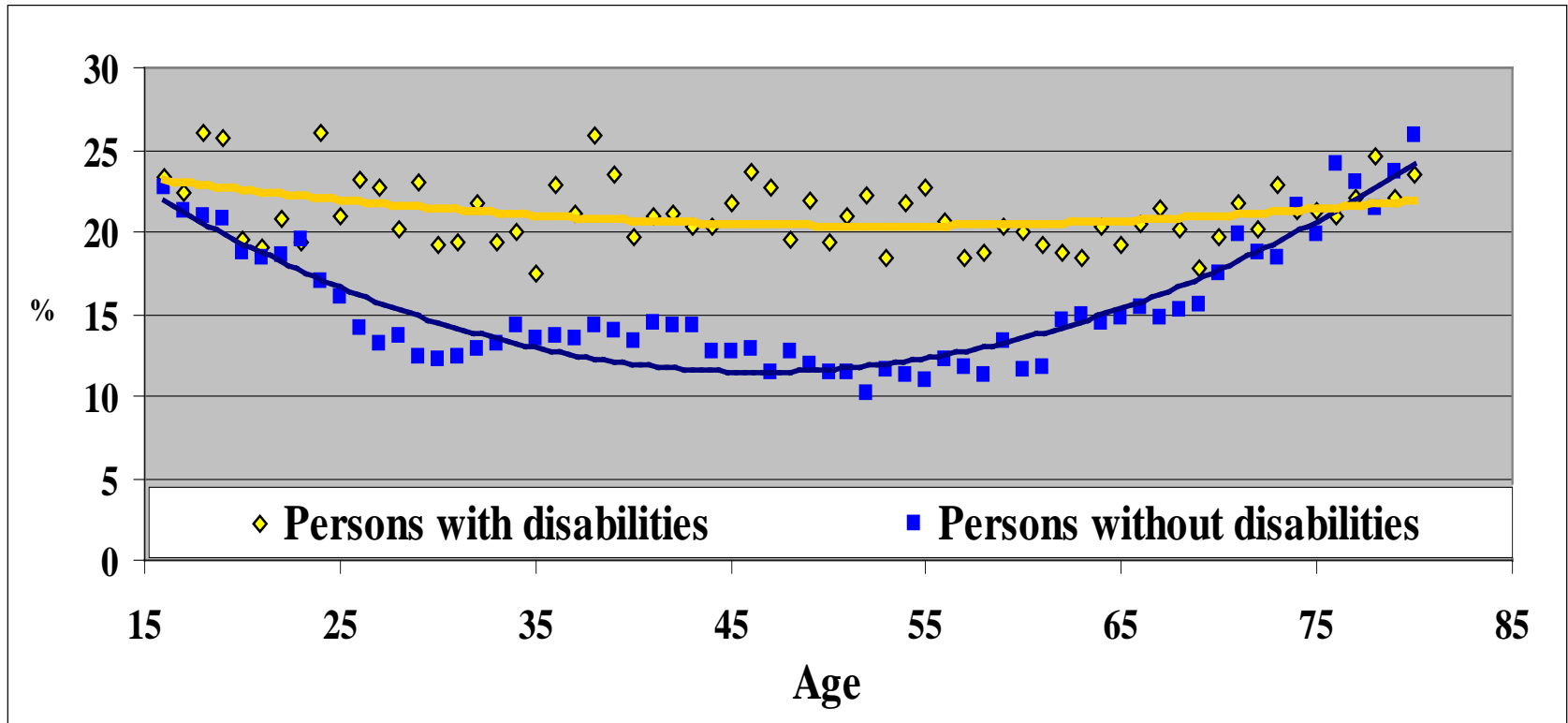


The reduction of poverty is an objective of EU 2020

Risk of poverty: if equivalised household disposable income is lower than 60% of the median national household equivalised disposable income.

RISK OF POVERTY

Proportion of people living in households with income below national poverty line



	Women disabled	Women non disabled	Men disabled	Men non disabled
EU	22	16	20	14